

# LBV, B and HB Hangers

**ENTER DIMENSIONS ONLY IF DIFFERENT FROM THOSE SHOWN IN CATALOG.**

Job No: \_\_\_\_\_ Take Off By: \_\_\_\_\_ Date Needed: \_\_\_\_\_ Date Ordered: \_\_\_\_\_

Model Number: \_\_\_\_\_ Quantity: \_\_\_\_\_

**JOIST INFORMATION:** (In inches)

Nominal Joist Size = \_\_\_\_\_  
(Example: 2x12)

Actual Joist Size = \_\_\_\_\_  
(Example: 2x12 = 1.5" x 11.25" actual size. 2x12 rough = 2" x 12" actual size)

**OPTIONS:**

Slope (45° MAX) (Fig. 1)      Up / Down      Angle = \_\_\_\_\_  
(Circle one)      (Specify degree)

Skew (45° MAX) (Fig. 2)      Right / Left      Angle = \_\_\_\_\_  
(Circle one)      (Specify degree)

Slope & Skew Joist Top Flush with Header at (Fig. 3)      Low Side / Center / High Side  
(Circle one)

Top Flange Sloped Down (35° MAX) (Fig. 4 & 5)      Right or Left      Angle = \_\_\_\_\_  
(Circle one)      (Specify degree)

Low Side / Center / High Side  
(Circle one)

Top Flange Bend (Fig. 6)      Open / Closed      Angle = \_\_\_\_\_  
(Circle one)      (Specify degree)

**CAUTION:** A joist with both slope and skew will project above the header when the height is measured from the low side (fig. 3).

**CAUTION:** A joist with top flange sloped only option will project above the header when the height is measured from the high side.

Figure 1 - Sloped down

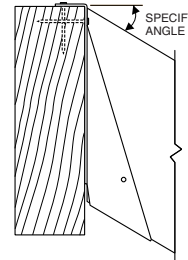


Figure 4 - Skewed, sloped and top flange sloped

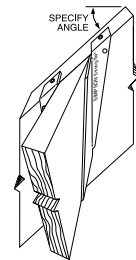


Figure 2 - Skewed left

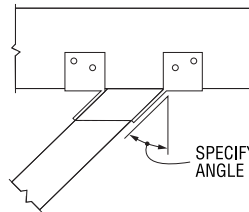


Figure 5 - Top flange, sloped down left

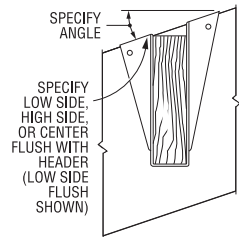


Figure 3 - Sloped down, skewed right, low side flush

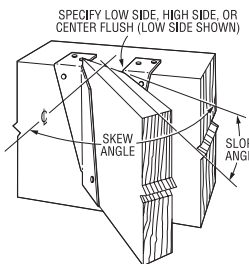
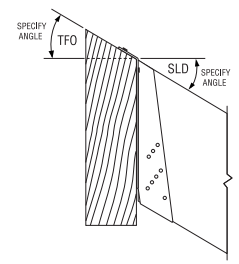


Figure 6 - Sloped down, top flange open



See the current Simpson Strong-Tie *Wood Construction Connectors* catalog for General Notes and warranty information. Use all specified fasteners. **Non-catalog products must be designed by the customer and will be fabricated by Simpson Strong-Tie Co. Inc. in accordance with customer specifications. Simpson Strong-Tie Co., Inc. cannot and does not make any representations regarding the suitability of use or load carrying capacities of non-catalog products. Simpson Strong-Tie Co., Inc. provides no warranty, expressed or implied, on non-catalog products.** The performance of such modified products or altered installation procedures is the sole responsibility of the designer. All orders for hangers requiring deviations other than what is on this worksheet must be accompanied by a detailed sketch or stamped engineering drawing.

**Home Office**  
5956 W. Las Positas Blvd.  
Pleasanton, CA 94588  
FAX: 925/847-1603

**Southwest USA**  
260 N. Palm Street  
Brea, CA 92821  
FAX: 714/871-9167

**Southeast USA**  
2221 Country Lane  
McKinney, TX 75069  
FAX: 972/542-5379

**Eastern Canada**  
5 Kenview Blvd.  
Brampton, ON L6T 5G5  
FAX: 905/458-7274

**Warehouses:**  
Enfield, CT  
Jacksonville, FL  
Langley, BC

**Northwest USA**  
5151 S. Airport Way  
Stockton, CA 95206  
FAX: 209/234-3868

**Northeast USA**  
2600 International Street  
Columbus, OH 43228  
FAX: 614/876-0636

**Quik Drive Factory**  
436 Calvert Drive  
Gallatin, TN 37066  
FAX: 615/451-9806

**Western Canada**  
11476 Kingston St.  
Maple Ridge, BC V2X 0Y5  
FAX: 604/465-0297

**Specials Factories:**  
Eagan, MN  
Kent, WA

**800-999-5099**  
**www.strongtie.com**

© Copyright 2006 Simpson Strong-Tie Company, Inc.

Printed in the USA

**T-LBV-B-HB-WS06 5/06**