

U/HU Hangers

ENTER DIMENSIONS ONLY IF DIFFERENT FROM THOSE SHOWN IN CATALOG.

Job No: _____ **Take Off By:** _____ **Date Needed:** _____ **Date Ordered:** _____

Model Number: _____ **Quantity:** _____

JOIST INFORMATION: *(In inches)*

Nominal Joist Size = _____
(Example: 2x4)

Actual Joist Size = _____
(Example: 2x4 = 1.5" x 3.5" actual size. 6x10 rough = 6" x 10" actual size)

OPTIONS:

Slope (45° MAX) (Fig. 3 & 4) Up / Down Angle = _____
(Circle one) *(Specify degree)*

Skew (67½° MAX) (Fig. 1 & 2) Right / Left Angle = _____
(Circle one) *(Specify degree)*

Hangers skewed 51-67½° requires a square cut (Fig. 9).

Concealed Flange Yes or No
(Specify HUC) *(Circle one)*

HU is available with A flanges concealed, provided the W dimension is 2½" or greater.

HU is available with one flange concealed when the W dimension is less than 2½".

Maximum Skew Degree for Skewed HUC Hangers

Hanger Width	Maximum Skew
2½"	26°
2¾"	26°
2⅞"	29°
3"	29°
3¼"	37°
3½"	38°
3⅝"	39°
3⅞"	42°

- Widths greater than 3⅞" maximum skew is 45°.
- Only acute flange concealed when skewed (Fig. 10).

Figure 1 - Skewed left

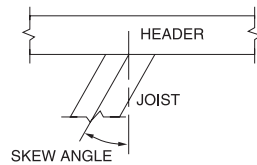


Figure 2 - Skewed right

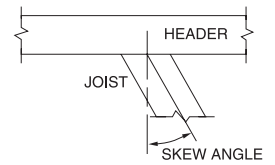


Figure 3 - Sloped up

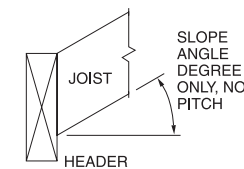


Figure 4 - Sloped down

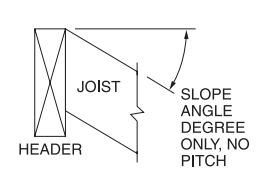


Figure 5 - Skewed left, sloped up

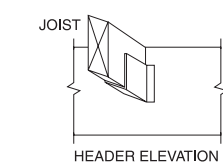


Figure 6 - Skewed right, sloped up

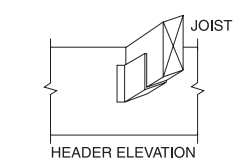


Figure 7 - Skewed left, sloped down

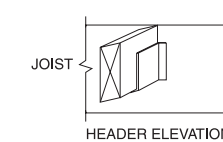


Figure 8 - Skewed right, sloped down

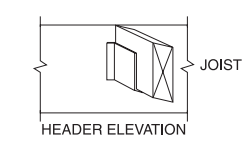


Figure 9 - Skewed right >50° (square cut)

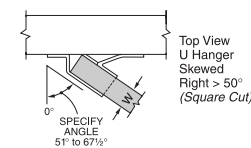
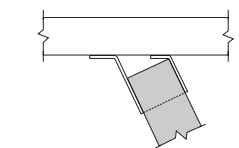


Figure 10 - HUC Skewed right, only acute angle concealed



See the current Simpson Strong-Tie *Wood Construction Connectors* catalog for General Notes and warranty information. Use all specified fasteners. **Non-catalog products must be designed by the customer and will be fabricated by Simpson Strong-Tie Co. Inc. in accordance with customer specifications. Simpson Strong-Tie Co., Inc. cannot and does not make any representations regarding the suitability of use or load carrying capacities of non-catalog products. Simpson Strong-Tie Co., Inc. provides no warranty, expressed or implied, on non-catalog products.** The performance of such modified products or altered installation procedures is the sole responsibility of the designer. All orders for hangers requiring deviations other than what is on this worksheet must be accompanied by a detailed sketch or stamped engineering drawing.

Home Office
5956 W. Las Positas Blvd.
Pleasanton, CA 94588
FAX: 925/847-1603

Southwest USA
260 N. Palm Street
Brea, CA 92821
FAX: 714/871-9167

Southeast USA
2221 Country Lane
McKinney, TX 75069
FAX: 972/542-5379

Eastern Canada
5 Kenview Blvd.
Brampton, ON L6T 5G5
FAX: 905/458-7274

Warehouses:
Enfield, CT
Jacksonville, FL
Langley, BC

Northwest USA
5151 S. Airport Way
Stockton, CA 95206
FAX: 209/234-3868

Northeast USA
2600 International Street
Columbus, OH 43228
FAX: 614/876-0636

Quik Drive Factory
436 Calvert Drive
Gallatin, TN 37066
FAX: 615/451-9806

Western Canada
11476 Kingston St.
Maple Ridge, BC V2X 0Y5
FAX: 604/465-0297

Specials Factories:
Eagan, MN
Kent, WA

800-999-5099
www.strongtie.com

© Copyright 2006 Simpson Strong-Tie Company, Inc.

Printed in the USA

T-U-HU-WS06 5/06